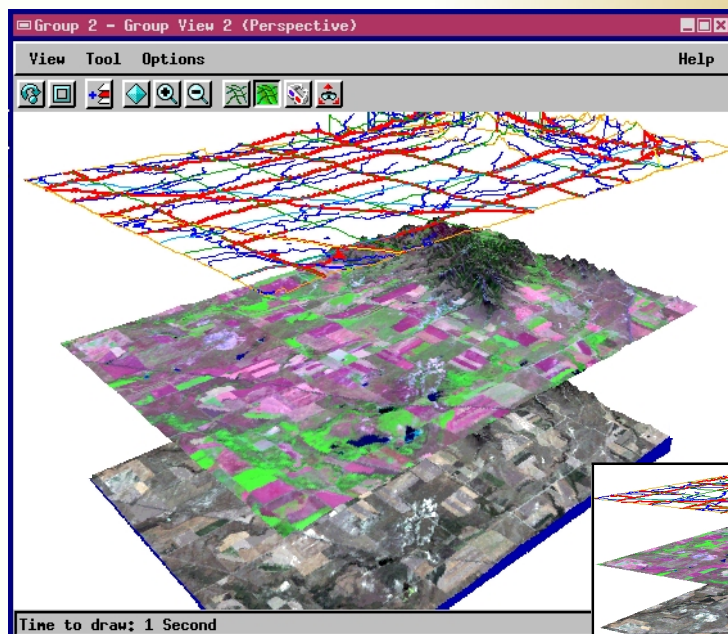


Floating 3D Layers

DID YOU KNOW . . . that 3D views allow you to make a stack of separate drape layers?

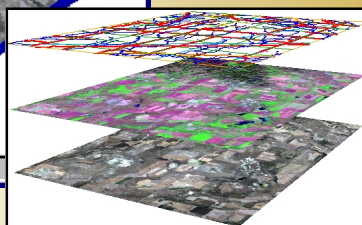
What Floating Layers Give You

- Display of all object types (raster, vector, CAD, TIN, and pinmap)
- Elevation surface defined by one or more raster objects
- Separate offset values for each floating layer
- Interactive controls to adjust viewpoint, distance, and scale
- A powerful tool for 3D visualization and feature comparison



Crow Butte natural color satellite imagery, false color 5-4-2 bands, and DLG vectors

If you don't specify a surface raster, floating 3D layers show in an exploded perspective view.



How Floating Layers Work

- Add one or more raster objects to define the elevation surface.
- Add any number of objects as drape layers.
- Open the Object Display Controls dialog for each drape layer and enter an offset value.
- Use the 3D Viewpoint Controls window to select viewer position, distance, direction and elevation scale.

FLOATING 3D LAYERS

WANT TO KNOW MORE?

See the Getting Started Booklet:

3D Perspective Visualization

