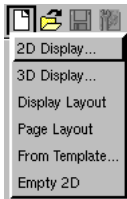


## Spatial Display

# Integrated Control

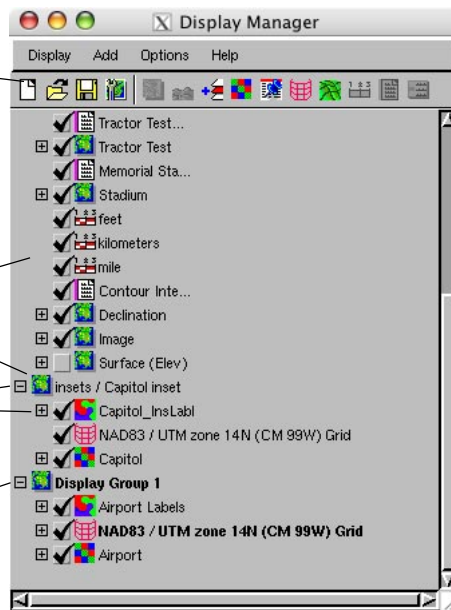


The New icon provides a menu to choose from.

When groups and layouts are opened they are automatically expanded by one level (which means layouts are expanded to show all groups but not layers and groups are expanded to show layers).

These gadgets let you expand/collapse the list.

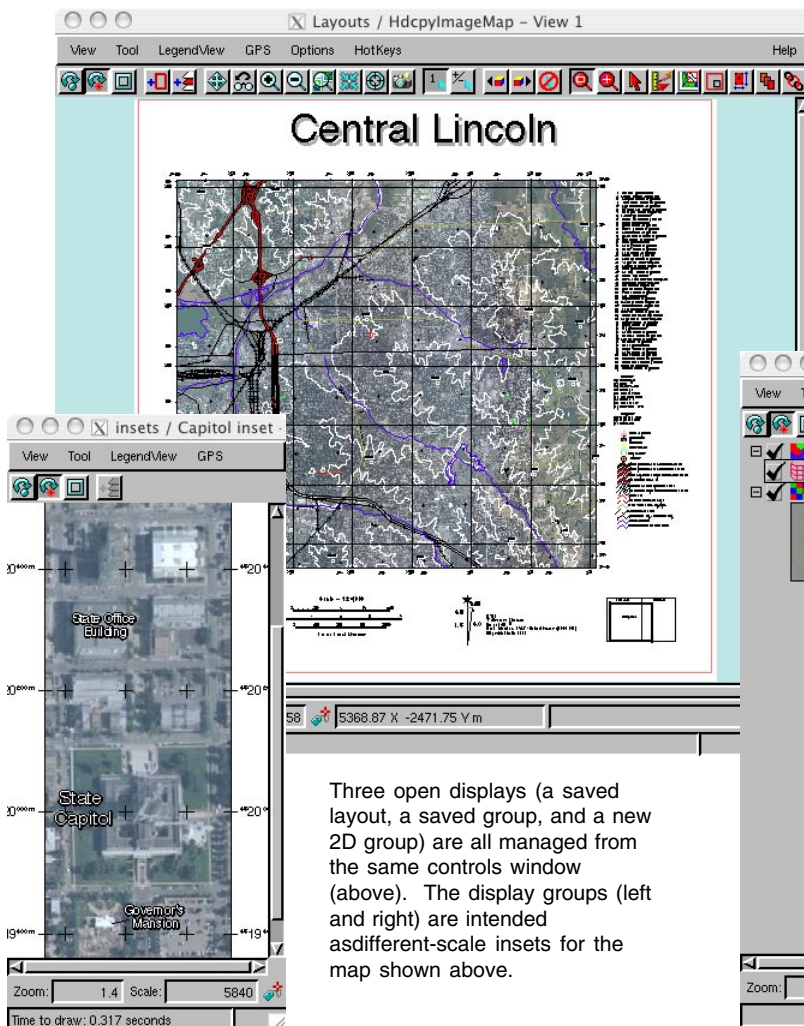
The display in bold is the active display, or the display to which layer additions and other changes will be made. You can make any level in the hierarchy active by clicking on its name.



The Display process now uses one controls window, the Display Manager, to manage the content of one or more views for different groups and layouts. All open groups and layouts (referred to collectively as displays) are managed from a single list in this Display Manager. When the Display process opens, use the New or Open icons on the controls window toolbar to get started (see the color plate entitled *Spatial Display: Getting Started Using the New Design*).

It is typical to work with a number of open displays, which may be related as illustrated here or unrelated. You may have multiple unrelated displays open because you are fine tuning the printed characteristics of one map

while starting on the next. When different displays have shared geographic extents, you can use the GeoLock feature in the TNT products to zoom and/or reposition all display views in concert. You can also have the scale and position of some or all View windows be independent of the others.



Three open displays (a saved layout, a saved group, and a new 2D group) are all managed from the same controls window (above). The display groups (left and right) are intended as different-scale insets for the map shown above.

