

Spatial Display

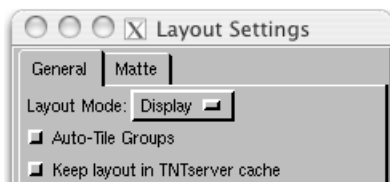
Layout Right Mouse Button Actions

The Display process has Right Mouse Button Menus (RMBMs) in the Display Manager window and the LegendView in the View windows. In the redesign of the Display process for TNT 2006:72, many features that were available using the left mouse button on an icon or menu are now more consistently organized on RMBMs in the Display Manager. This color plate focuses on the options available when you right-click on a layout icon or name in the Display Manager list. Other color plates explore the RMBMs for the layer and group icons. An additional plate entitled *Spatial Display: Mouse Actions in the Display Manager* describes left-click actions and cursor pausing events.



When you right-click on a layout icon or name, the RMBM has the choices shown at the right.

Settings. This selection opens the Layout Settings window (shown at left), which can also be opened by clicking on the layout icon. The General tabbed panel lets you change layout modes between display and page layout, choose whether to auto-tile groups as new groups are added to a layout, and whether to keep the layout in the TNTserver cache. This last option is relevant only if the layout will be posted for viewing using



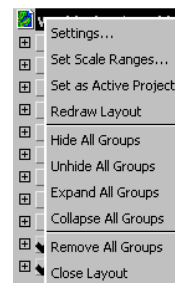
TNTserver. The Matte tabbed panel lets you create a matte for the layout as a whole.

Set Scale Ranges. Opens the Scale Ranges window (at right) so you can set the minimum and/or maximum map scale at which all layers and/or groups will be visible on the view canvas. All layers in a display are listed in the Scale Ranges window. Note the indent for some items in the Name column in the illustration. Group names are not indented while the names of layers in the group are indented and listed below the group name. Minimum and maximum map scales can be set for a group as a whole (for example, the Vegetation group at the right) or for individual layers (for example, World Elevation and Blue Marble Next Generation layers). The entry in the minimum field is the smallest scale number (map scale = 1:scale number) at which that layer/group is visible (in other words, if you zoom in beyond that scale, the layer/group is no longer visible, but if you zoom out beyond that scale, the layer/group may be drawn). The entry in the maximum field is the largest scale number at which that layer/group is visible (in other words, if you zoom in beyond that map scale, the layer may appear and if you zoom out beyond it, the layer will not be drawn). By setting both a minimum and maximum, you set a scale range in which a layer is visible on the view canvas.

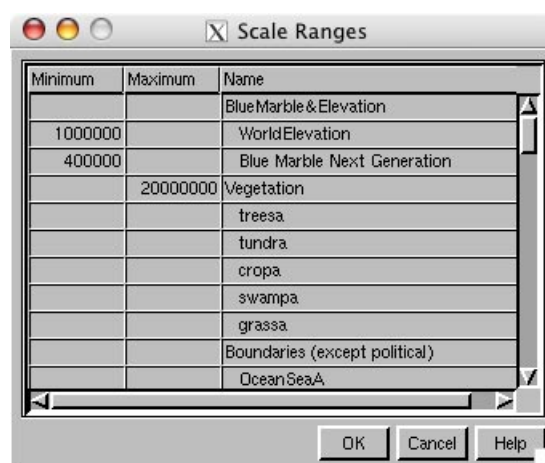
You can set scale ranges for all display types (groups and layouts) and the Scale Ranges window includes all groups/layers in that display. If the display is only a single 2D or 3D group, there is no indented structure in the Scale Ranges window. Note that groups/layers are listed in their drawing order, which is bottom to top order for the list in the Display Manager.

Set as Active Display. Makes this display the active display, brings its View window to the front, and shows its name in bold in the Display Manager list. The same result is achieved by left-clicking on the display name in the list.

Redraw layout. Redraws the layout at its current zoom and position.





Layout RMBM



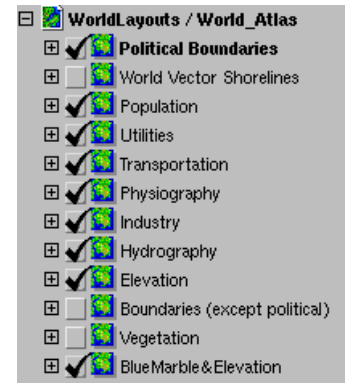
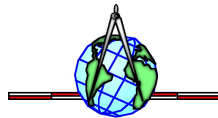
Hide All Groups. Unchecks all group Show/Hide check boxes. Obviously, nothing will be drawn on the view canvas if you make this choice. Its purpose is to make it easy to draw just one or a few groups out of many after turning them on individually following this choice.

Unhide All Groups. Checks all group Show/Hide check boxes in the layout. Whether anything is immediately drawn depends on other settings and the current map scale.

Expand All Groups. Expands the groups in the list area so that all its layers are shown (partially illustrated, below right). Same effect as clicking on the Expand icon  to the left of all group names. Once groups have been expanded, you can expand layers and so on.

Collapse All Groups. Collapses all groups in the list area regardless of their current level of expansion so that only the group names are listed (shown right). Same effect as clicking on the Collapse icon  to the left of all group names.

Remove All Groups. Removes all groups from the layout. Provides an alternative to closing the layout and opening a new blank layout.



groups collapsed



groups expanded

