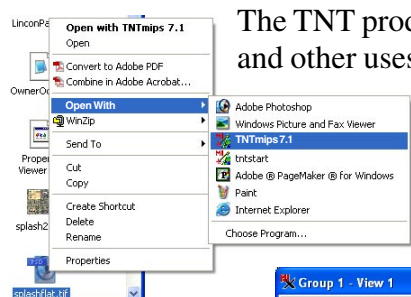


System

AutoOpen External Spatial Data Files

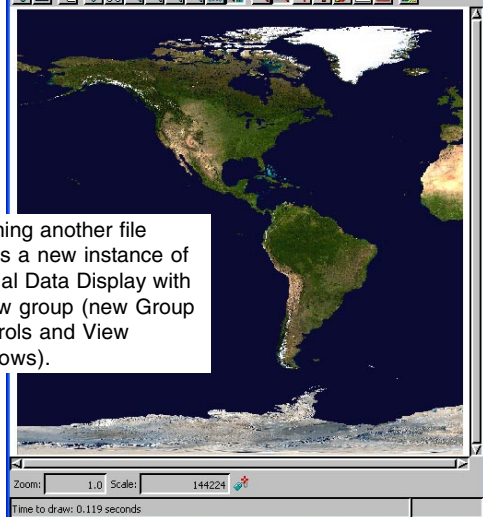


The TNT products open files from the desktop in all formats that are supported for direct display and other uses (see back of this page). You can use either of the two methods available: double-click on the icon for the file you want to view or click on the file and choose *Open With* TNTmips. Either of these selections launches Spatial Data Display and opens a new View in the Spatial Data Display process with the file you selected. Selecting a second file opens another instance of Spatial Data Display and another new View. Installing TNTmips is all you have to do for TNTmips to be a choice on the

Note: TNTmips 7.1 is also available at the top of the first menu cascade in Windows. Using TNTmips to open supported files in external formats opens three windows: the Spatial Data Display toolbar, the Group Controls window, and a Group View.



Opening another file opens a new instance of Spatial Data Display with a new group (new Group Controls and View windows).



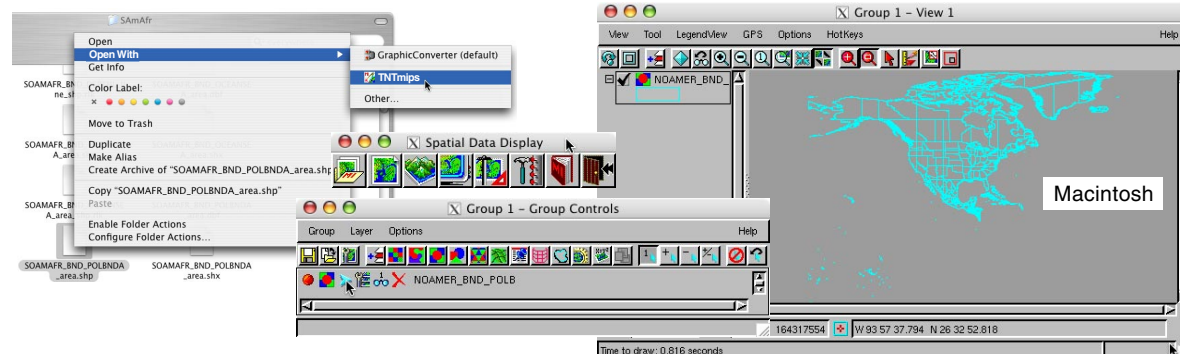
Open With menu for Windows and Mac OS X.

Once you have opened the Spatial Data Display process in this fashion, you can use the Group Controls to add additional layers to a view just as when Display is opened from within TNTmips. Thus, you can open a file in an external format that you want to use as a reference layer, zoom in to an area of interest, then add additional layers that are too dense for reasonable display at full view. As long as the extents of the added layers fall completely within the first layer opened, the View will remain at the same position and scale.

The double-click opening method requires that TNTmips be assigned as the default application for opening files of the selected type. Many files on your machine that can be directly used by the TNT products may already have a different default application assigned

for double-click opening, such as Adobe Photoshop or Apple Preview for TIFF (*.tif) and JPEG (*.jpg) files or ESRI ArcView for shapefiles (*.shp). You can still open these files in their originally assigned application if you choose *Open With* instead of double-clicking. To assign TNTmips as the default application for all files of the same type, right-click on one file of that type, choose Properties (Windows) or Get Info (Mac) and change the *Open With* application. Changing the application from the Properties window in Windows changes the opening application for all files of the same type. To set it for all files on the Mac, click on Change All in the *Open With* panel of the Info window.

Most files will display automatically but you may be asked one or more questions when opening a file if there are auto-link issues to resolve, such as large rasters not pyramided, styles not found, or the inability to



determine the coordinate reference system. For more information on these prompts, see the color plate entitled *Resolving Auto-Link Issues*.

These Geodata Files AutoOpen

format	extension	description
Raster		
TIFF	*.tif	Tagged Image File Format, developed by Aldus and Microsoft, copyright now held by Adobe Systems
GeoTIFF	*.tif	an effort by over 160 different remote sensing, GIS, cartographic, and surveying-related companies and organizations to establish a TIFF-based interchange format for georeferenced raster imagery
JPEG2000	*.jp2	Part 1 compliant files supported, may contain georeference as internal metadata, uses wavelet compression developed by LuraTech and others
JPEG	*.jpg	Joint Photographic Experts Group
PNG	*.png	Portable Network Graphics
MrSID	*.sid	LizardTech proprietary wavelet compression format
ECW	*.ecw	Earth Resources Mapping proprietary wavelet compression format, georeference may be in *.tab file
Shape		
shapefile	*.shp	ESRI format, may have internal georeference
Oracle Spatial		Oracle Spatial is not a file based format, select by table
CAD		
DGN	*.dgn	Intergraph Microstation format, internal georeference
TAB	*.tab	MapInfo format, internal georeference
DXF	*.dxf	AutoCAD Drawing eXchange Format
DWG	*.dwg	AutoCAD Drawing format

